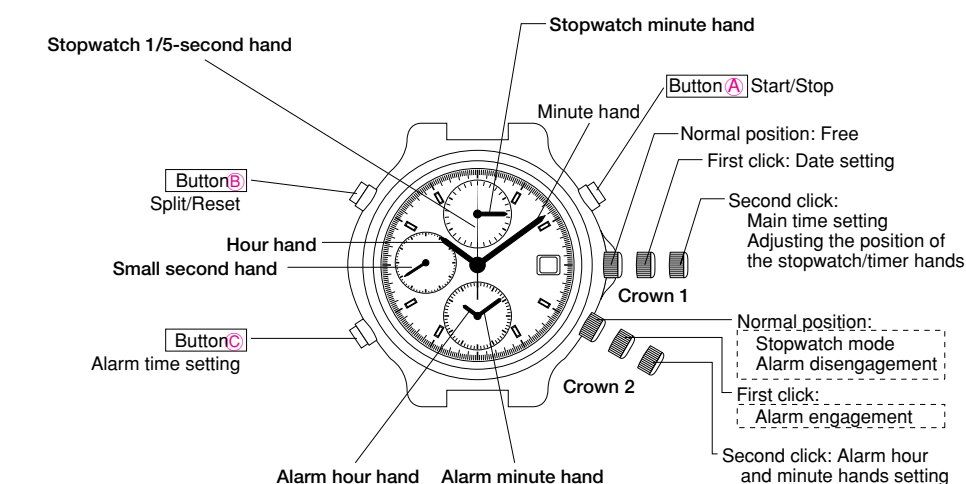


FEATURES

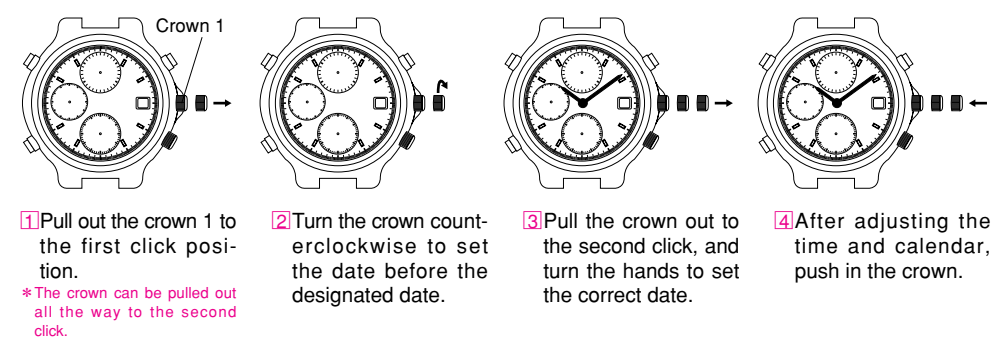
ALBA Cal. Y182 is a multi-display analogue watch featuring stopwatch, alarm functions.

- The current time is indicated by the hour and minute hands and a small second hand.
- The stopwatch measures up to 30 minutes in 1/5 seconds.
- The alarm can be set to ring at the designated time on a 12-hour basis.
- Date is displayed in numerals.
- Battery life indicator: When the battery nears its end, the small second hand moves at two-second intervals to indicate that the battery needs to be replaced.

DISPLAY AND CROWN/BUTTON OPERATION

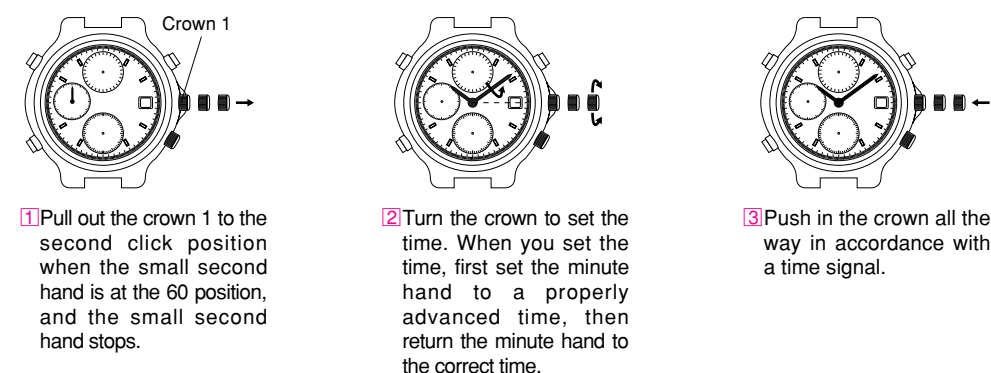


TO SET THE DATE

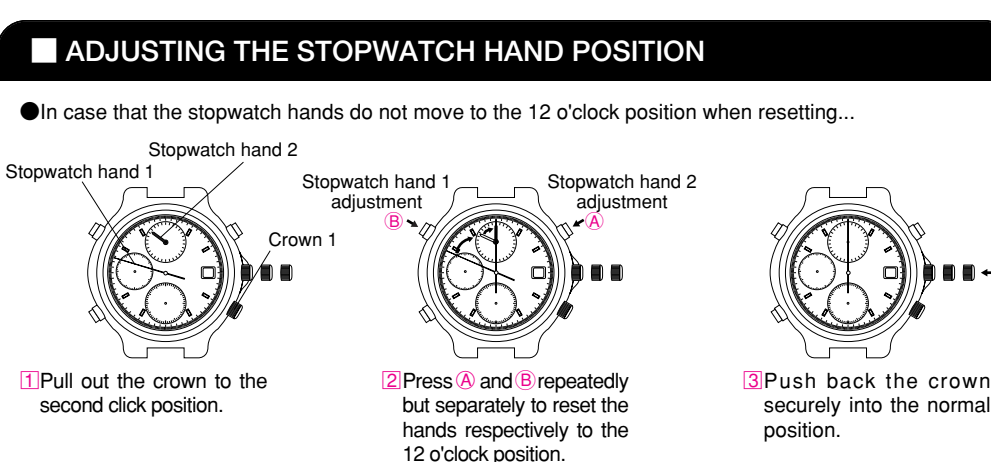


* Do not set the date when the hands are pointing to the time between 9 P.M. and 1 A.M. If the setting of the date is made when the hands are pointing to the time between 9 P.M. and 1 A.M., the date will not change to the next date. Please set the date after turning the hands except during the above period.

TO SET THE TIME



ADJUSTING THE STOPWATCH HAND POSITION

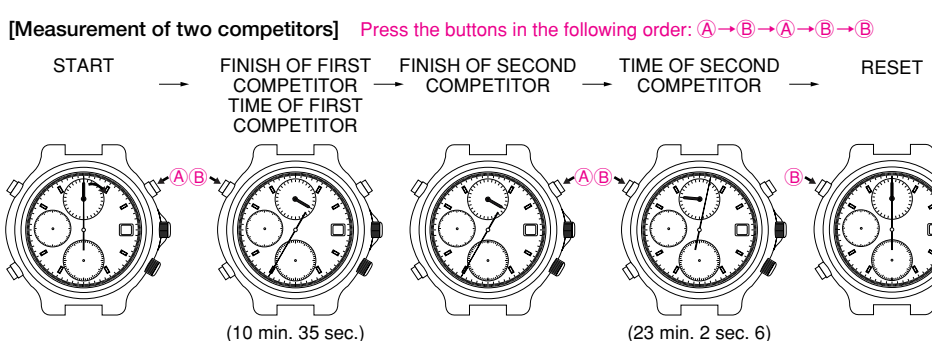
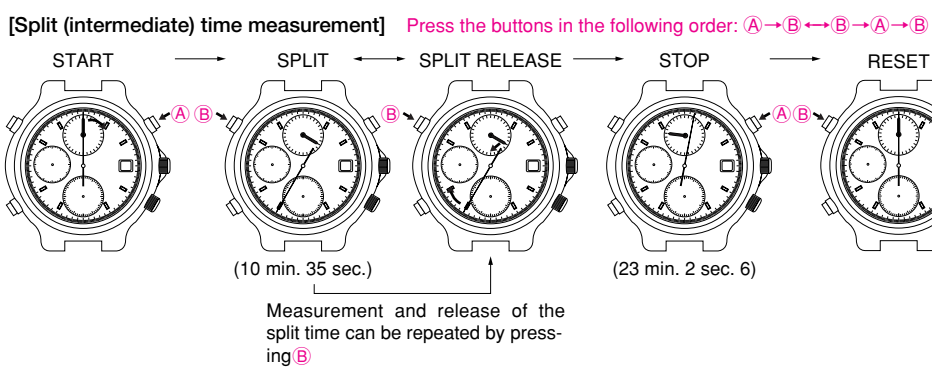
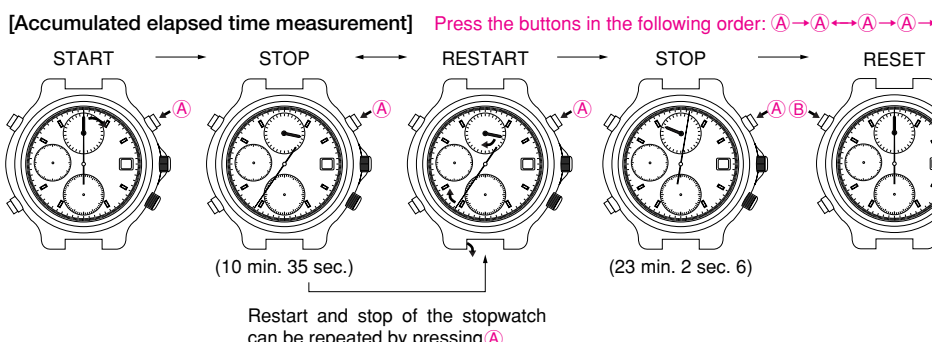
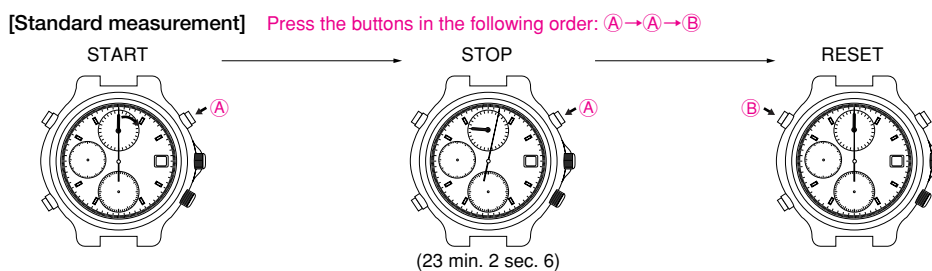
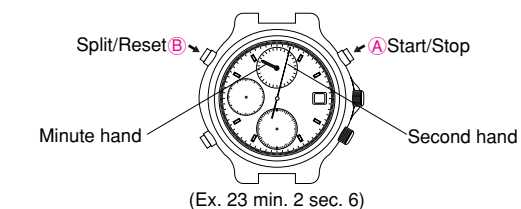


* The hands move quickly if the respective buttons are kept pressed 2 seconds.
* Pull the crown 1 out to the 2nd click position, and the second hand stops. Then turn the hands to set the time.

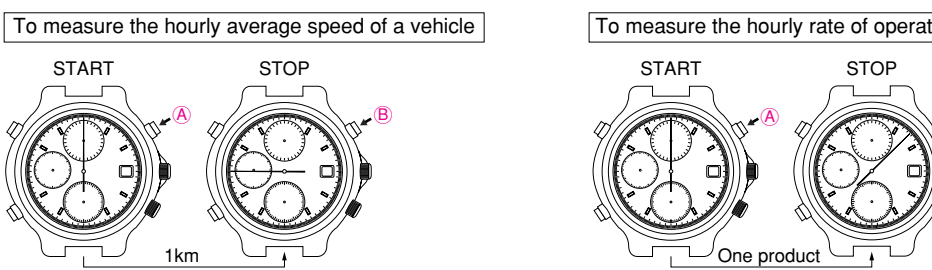
HOW TO USE THE STOPWATCH

- The stopwatch can measure up to 30 minutes in 0.2 seconds.
- * Before using the stopwatch, be sure to reset the hands to "0" position.
- * If the watch is left untouched with the stopwatch measuring, it automatically stops in 6 hours after it is started.

[Reading of Stopwatch]



HOW TO USE THE TACHYMETER (For the models with a tachymeter scale on the dial)



① Use the stopwatch to determine how many seconds it takes to go one kilometer. **80km/h**

② Read the tachymeter scale where the second hand points.

① Use the stopwatch to measure the time required to complete one product. **400 products/hour**

② Read the tachymeter where the second hand points.

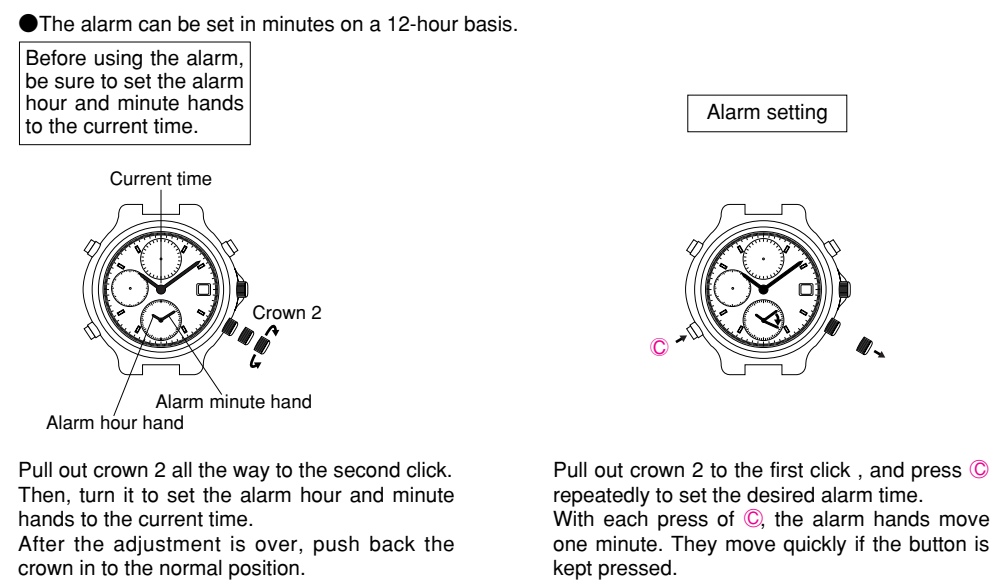
Note: While the stopwatch is counting, do not pull out crown 1 to the second click, or do not set crown 2 to any other position than the first click. Otherwise, the stopwatch stops counting and the hands are reset to "0" position.

SPECIFICATIONS

- Frequency of crystal oscillator 32,768Hz (Hz=Hertz...Cycles per second)
- Loss/gain Average monthly rate : ±20 seconds (in temperatures of between 5°C and 35°C on your wrist)
- Operational temperature range -5°C ~ +50°C
- Driving system Step motor, 4 pieces
- Display system [Time display] Hour, minute and second hands
[Stopwatch display (The stopwatch can measure up to 30 minutes in 1/5 seconds.)] Minute and second hands
[Alarm display] Hour and minute hands. The alarm can be set in the 12-hour indication.
- Battery Silver oxide battery, SB-BP, 1 piece
- Battery life indicator By the small second hand
- IC (Integrated Circuit) C-MOS-LSI, 1 piece

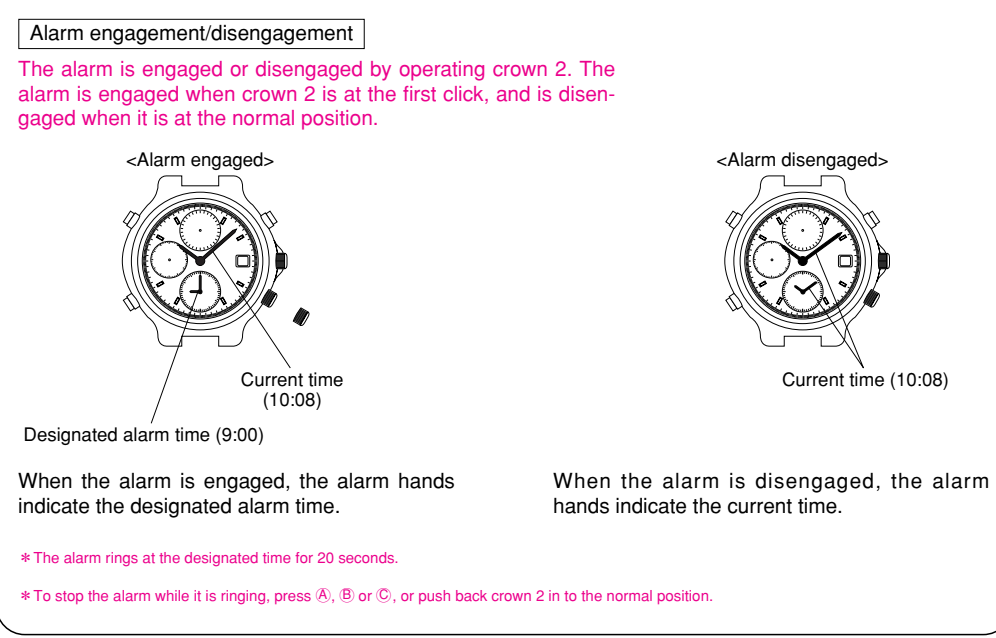
* The specifications are subject to change without prior notice, for product improvement.

HOW TO USE THE ALARM



When the alarm is engaged, the alarm hands indicate the designated alarm time.

When the alarm is disengaged, the alarm hands indicate the current time.



LUMIBRITE

LumiBrite is a newly-developed luminous paint that absorbs the light energy of the sunlight and lighting apparatus in a short time and stores it to emit light in the dark.

REMARKS ON THE BATTERY

- Battery life indicator**
The battery needs to be replaced within two or three days when you see the second hand moving in two second instead of the normal one second interval. The watch will, however, remain accurate while the second hand is moving in two second intervals.
- Notes on the battery**
 - Battery life**
When a new normal battery is installed, this watch operates for approximately two years. However, if the alarm is used more than once a day, and/or the stopwatch for 20 seconds a day, the battery life may be less than the specified period.
 - Monitor battery**
The battery in your watch may run down in less than two years after the date of purchase, as it is a monitor battery which is inserted at the factory to check the function and performance of the watch.
 - Battery change**
① For battery replacement, be sure to have the battery replaced with a new one at the retailer from whom the watch was purchased or an ALBA DEALER, and request the battery for exclusive use with the ALBA watches.
 - WARNING**
 - Do not remove the battery from the watch.
 - If it is necessary to take out the battery, keep it out of the reach of children.
 - If the child swallows it, consult a doctor immediately as it will adversely affect the health of the child.

ALBA

セイコー株式会社
本 社 東京都中央区京橋2丁目6番21号 〒104

取扱説明書 INSTRUCTION **説明書**

ALBA 説明書

このたびはアルパクオーツをお買いあげいただきありがとうございました。ご使用前にこの取扱説明書をよくお読みのうえ正しくご愛用くださいますようお願い申し上げます。なお、この取扱説明書はお手もとに保存し、必要に応じてご覧ください。

TO PRESERVE THE QUALITY OF YOUR WATCH

CAUTION

WATER RESISTANCE

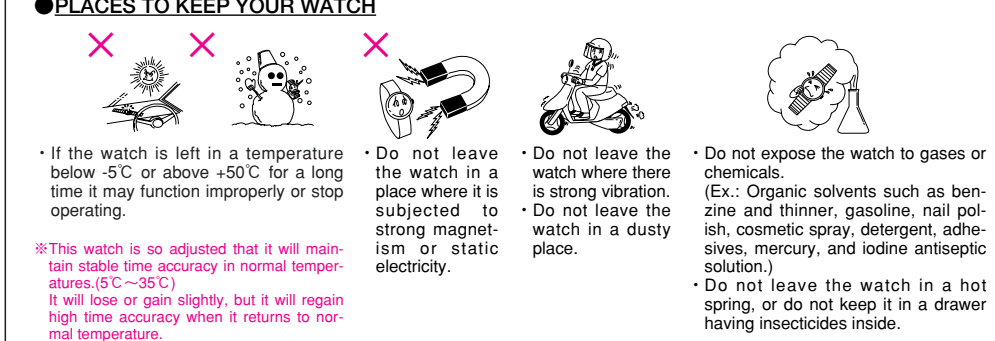
Check the dial or case back of your watch for the water resistant quality, and then see the table below.

Do not turn or pull out the crown when the watch is wet, as water may get inside the watch.

	Designed and manufactured to withstand the water usually experienced in daily living such as showers, and rain.	Designed and manufactured or swimming and kitchen work.	Skindiving without scuba.	Genuine diving scuba or helix rings.	Button operation when the watch is wet.	Crown operation when the watch is wet.
"WATER RESISTANT" is not inscribed on the back of your watch case.	×	×	×	×	×	×
"WATER RESISTANT" is inscribed on the back of your watch case.	○	×	×	×	×	×
"WATER RESISTANT 5 10 - 15 - 20 BER.", "WATER RESISTANT" and marks inscribed on the back of your watch case.	○	○	×	×	○	×
"WATER RESISTANT 10 - 15 - 20 BER."	○	○	○	×	○	×

WARNING

- If your watch is 3 bar water resistant, do not use it in water.
- If your watch is 5 bar water resistant, do not use it in any type of diving including skin diving.
- If your watch is 10 or 20 bar water resistant, do not use it in saturation diving or scuba diving.



CAUTION

CARE OF YOUR WATCH

- The case and bracelet touch the skin directly just as underwear. If they are left dirty, the edge of a sleeve may be stained with rust of those who have a delicate skin may have a rash.
- After removing the watch from your wrist, wipe perspiration or moisture with a soft cloth. This will prevent the watch from being soiled, adding to the life of the gasket.

METAL BRACELET

- Clean the watch bracelet with a soft toothbrush dipped in water or soapy water. If your watch is not water-resistant, be careful not to get the case wet when cleaning.

LEATHER BAND

- When removing moisture from a leather band, do not rub the band with the cloth as this may discolor it or reduce its gloss. Be sure to blot up the moisture using a soft dry cloth.

SOFT PLASTIC BRACELET

- If your watch has a soft plastic band such as urethane band, do not leave the watch under a fluorescent lamp or direct sunlight for a long time, or do not leave the band soiled. Otherwise, the band may be discolored, hardened or broken. Also, do not keep the watch in a place where it is exposed to high humidity, or do not leave the band wet with perspiration or water. Otherwise, the band may be discolored in a very short time.
- When the band is soiled, rinse it in soapy water. Do not use solvents for cleaning as some solvents may deteriorate the band.

If your watch has a semitransparent urethane band, which is easily discolored, special care should be taken to keep it clean. Depending on the condition of use, the semitransparent band may be discolored after several months of use.

- If your watch is not water-resistant, be careful not to get wet with water or sweat. When it gets wet with water or sweat, wipe it thoroughly dry with a hygroscopic cloth.
- If your watch is 5, 10 or 20 bar water resistant, rinse it in a bowl of fresh water after used in seawater. Do not use chemicals to wash it.
- If your watch has a rotating bezel, clean the bezel regularly. Otherwise, dust will gather under it, making the rotation harder.

CAUTION

RASH AND ALLERGY

- Adjust the bracelet or band so that there will be a little clearance between the bracelet or band and your wrist to avoid accumulation of perspiration.
- If you are constitutionally predisposed to rash, the band may cause you to develop a rash or an itch depending on your physical condition.
- The possible causes of the rash are as follows:
 - Allergy to metals or leathers
 - Rust, dust or perspiration on the watch or band
 - If you develop any skin reactions, take off the watch and consult a doctor immediately.

PRECAUTIONS ON WEARING YOUR WATCH

Take utmost care in the following cases:

- When clasping and unclasping the band, you may damage your nail, depending on the type of clasp used with the band.
- In case you tumble and fall or bump into others with the watch worn on your wrist, you may be injured by the reason of the fact that you wear the watch.
- When you make contact with children, especially with infants, they may get injured or develop a rash caused by allergy.

CAUTION

- If your watch is of the fob or pendant type, the strap or chain attached to the watch may damage your clothes, or injure the hand, neck, or other parts of your body.

PERIODIC CHECK

- We suggest that you have your watch checked by ALBA DEALER every 2 or 3 years or when the battery is replaced for oil condition, battery electrolyte leakage or damage due to water or sweat. After checking the watch, adjustment and repair may be required.
- When replacing the parts or battery, please specify "ALBA GENUINE PARTS". If an old battery is kept in the watch for a long time, electrolyte leakage from the battery may damage the module.
- Be sure to have the gasket and push-pin replaced with new ones by the ALBA DEALER when checking the watch or the battery is replaced.