

# WIRED

## 取扱説明書 INSTRUCTION VK63C

WIRED 説明書 VK63・VK73・VK67

このたびは弊社ウオッチをお買いあげいただきありがとうございます。ご使用前にこの取扱説明書をよくお読みの上正しくご愛用くださいますようお願い申し上げます。なお、この取扱説明書はお手もとに保存し、必要に応じてご覧ください。

※金属バンドの調整は、お買い上げ店にご依頼ください。ご贈答、ご転居などにより、お買い上げ店での調整が受けられない場合は、弊社お客様相談窓口へ依頼ください。お買い上げ店以外では有料もしくはお取扱いできない場合があります。  
※お買い上げ時の電池は、機能や性能を検査するための電池（モニター電池）です。保証期間内でも電池交換は有料となります。  
※電池に腐食止用の保護フィルムがはられている場合があります。必ずはがしてお使いください。はられたままにしておくと、汚れ、汗、ゴミ、水分などが付着してさびが発生の原因となります。

弊社製品についての修理その他のご相談は、「お買い上げ店」で承っております。なお、ご不明の点は下記へお問い合わせください。

全国共通フリーダイヤル 0120-612-911  
お客様相談室  
〒100-0005 東京都千代田区丸の内 3-1-1 国際ビル  
〒550-0013 大阪府西区新町 1-4-24 大阪西/橋新町ビルディング  
セイコーウオッチ株式会社  
本社 〒105-8467 東京都港区虎ノ門2-8-10  
http://www.seiko-watch.co.jp/

1206

For proper and safe use of your watch, please read the instructions carefully in this booklet before using the watch. Keep this manual handy for easy reference.

※Length adjustment service for metallic bands is available at the retailer from whom the watch was purchased. If you cannot have your watch repaired by the retailer from whom the watch was purchased because you received the watch as a gift or you moved to a distant place, please contact a SEIKO CUSTOMER SERVICE CENTER.

The service may also be available on a chargeable basis at other retailers, however, some retailers may not undertake the service.  
※The re-stated battery is used to check the function and performance of the watch. You will be charged for battery replacement even if the battery runs down within the guarantee period.

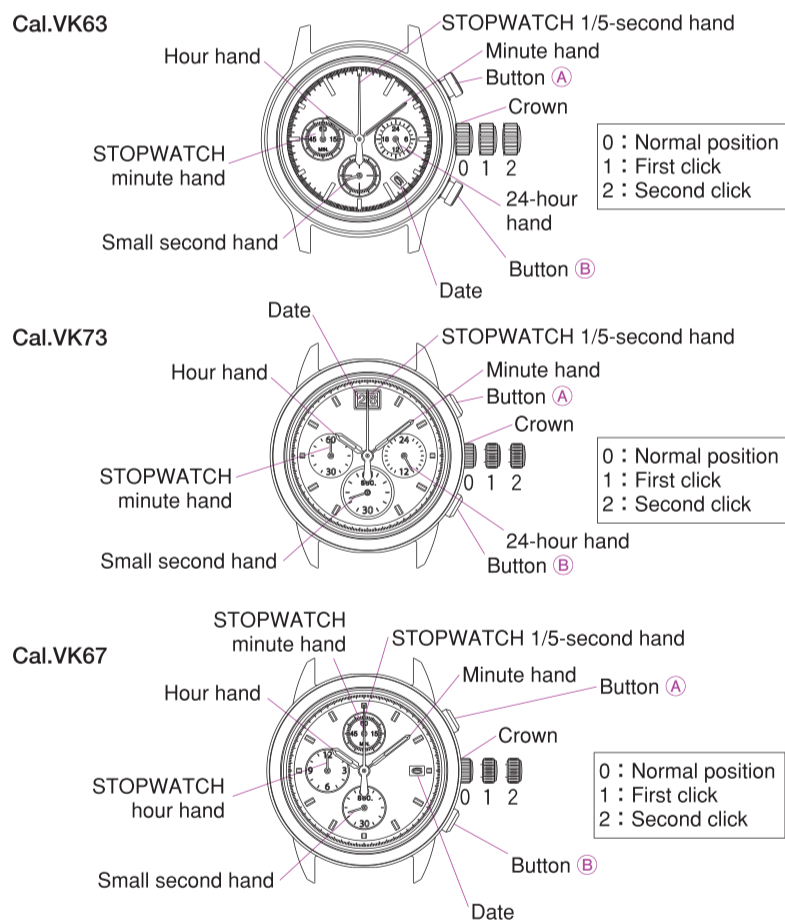
※If your watch has a protective film for preventing scratches, make sure to peel it off before using the watch. If the watch is used with the film on it, dirt, sweat, dust, or moisture may be attached to the film and may cause rust.

### FEATURES

This is a multi-display analogue watch featuring a stopwatch function.

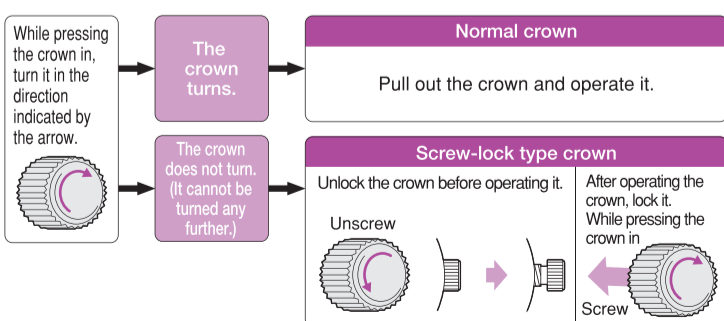
- Indicated by the hour, minute, second and 24-hour hands.
- The stopwatch can measure up to 60 minutes in 1/5 second increments. After 60 minutes, it will automatically be stopped.
- VK73 is wide calendar display type.
- Indicated by the hour, minute, second hands.
- The stopwatch can measure up to 12 hours in 1/5 second increments. After 12 hours, it will automatically be stopped.

### DISPLAY AND CROWN/BUTTON OPERATION



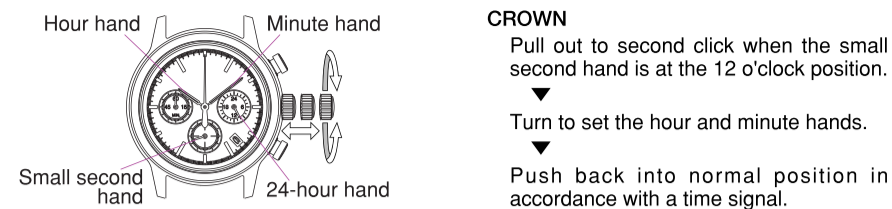
### CROWN

There are two types of crown, a normal crown and a screw-lock type crown. Please check the type of the crown of your watch.



- ※If your watch has a screw-lock type crown, the crown screws into the watch to prevent malfunction and increase water resistance.
- ※Be careful not to screw the crown in by force as it may damage the slots of the crown.

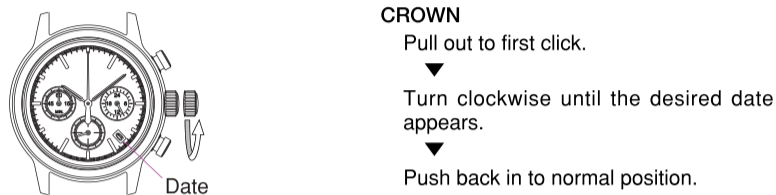
### SETTING THE TIME



1. When the stopwatch is or has been measuring, if the crown is pulled out to the second click, the stopwatch will continue the current measurement.
2. The 24-hour hand moves correspondingly with the hour hand. ※VK67 does not have 24-hour hand.
3. The moment the date changes is midnight. When setting the hour hand, make sure to check that AM/PM is correctly set by using the 24-hour hand as an AM/PM indicator.
4. When setting the minute hand, first advance it 4 to 5 minutes ahead of the desired time and then turn it back to the exact minute.

### SETTING THE DATE

- Before setting the date, be sure to set the time.



1. Date setting should always be carried out after the time is correctly set.
2. Manual date adjustment is required on the first day after a month that has less than 31 days: February, April, June, September and November.
3. Do not set the date during any time between 9:00 P.M. and 3:00 A.M. Date setting during this time period may cause failure of date change on the following day.

### STOPWATCH

- VK63/VK73
- The stopwatch can measure up to 60 minutes in 1/5-second increments.
  - After measuring 60 minutes, the stopwatch will automatically stop.
- VK67
- The stopwatch can measure up to 12 hours in 1/5 second increments.
  - After measuring 12 hours, the stopwatch will automatically stop.
- Before using the stopwatch, be sure to check that the STOPWATCH hands are reset to the "0" position.

(How to reset the stopwatch)

- While the STOPWATCH hands are moving
1. Press Button (A) to stop the stopwatch.
  2. Press Button (B) to reset the stopwatch.

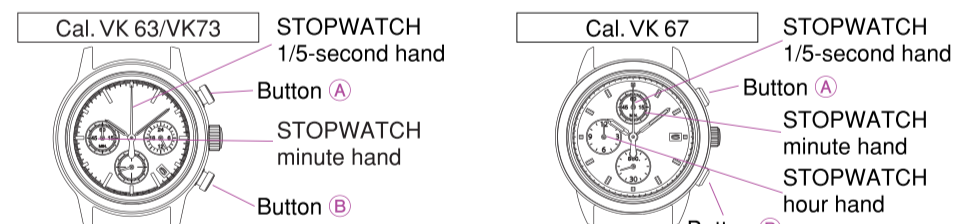
While the STOPWATCH hands are stopped

1. Press Button (B) to reset the stopwatch.

#### Standard measurement



#### Accumulated elapsed time measurement



- ※ Restart and stop of the stopwatch can be repeated by pressing button (A).
1. You may feel that the buttons of the watch are harder to press compared with those of conventional watches. This is due to the special construction needed for the stopwatch function; therefore, is not a malfunction.
  2. While the stopwatch is measuring, pressing button (B) will reset the stopwatch. Be careful not to press button (B) by mistake.

### TROUBLESHOOTING

Problem	Possible cause	Solution
The watch stops operating.	The battery has run down.	Have the battery replaced with a new one immediately by the retailer from whom the watch was purchased.
The watch gains/loses time temporarily.	The watch has been left in extremely high or low temperatures for a long time.	This condition will be corrected when the watch temperature returns to normal. Re-set the correct time. The watch is so adjusted that it works with stable accuracy when worn on your wrist at a temperature between 5°C and 35°C.
	The watch was brought into close contact with a magnetic object.	This condition will be corrected when the watch is kept away from close contact with the magnetic source. Re-set the correct time. If the problem persists, consult the retailer from whom the watch was purchased.
	You dropped the watch, hit it against a hard surface or wore it while playing active sports. The watch was exposed to strong vibrations.	Re-set the correct time. If the problem persists, consult the retailer from whom the watch was purchased.
The date changes at 12 o'clock noon.	AM/PM is not properly set.	Advance the hour hand by twelve hours.
The glass is blurred and the blur persists for a long time.	Water got inside the watch due to the deterioration of the gasket, etc.	Consult the retailer from whom the watch was purchased.

※For solution of troubles other than those above, contact the retailer from whom the watch was purchased.

### REMARKS ON THE BATTERY

- (1) Battery Life  
When a new normal battery is installed, this watch operates for approximately three years. However, if the stopwatch is used for more than 60 minutes a day, the battery life may be less than three years.
- (2) Monitor battery  
The battery in your watch may run down in less than two years after the date of purchase, as it is a monitor battery, which is inserted at the factory to check the function and performance of the watch.
- (3) Battery change  
For battery replacement, be sure to have the battery replaced with a new one at the retailer from whom the watch was purchased, and request they only use a genuine SEIKO battery.  
If the old battery is left in the watch for a long time, a malfunction may be caused due to battery leakage, etc. Have it replaced with a new one as soon as possible.  
There is a charge for battery replacement even if the battery runs down within the guarantee period.  
Once the case back is opened for battery replacement or other purposes, the original water resistant quality designed for the watch may deteriorate when it is closed. When you have the battery replaced with a new one, also request a water resistance test pertaining to the water resistant quality of your watch. If your watch has a 10-bar or higher water resistant quality, be sure to have such test performed on the watch every time the battery is replaced.

#### WARNING

- Do not remove the battery from the watch.
- If it is necessary to take out the battery, keep it out of the reach of children.
- If a child swallows it, consult a doctor immediately as it will adversely affect the health of the child.

#### WARNING

- Never short-circuit, tamper with or heat the battery, or never expose it to fire as it may explode, generate and intense heat or catch fire.
- The battery in your watch is not rechargeable. Never attempt to recharge it, as this may cause battery leakage or damage to the battery.
- If the watch is left in a temperature below +5°C or above +35°C for a long time, the battery leakage may result, causing the battery life to be shortened.

### SPECIFICATIONS

1. Frequency of crystal oscillator .....32,768 Hz (Hz = Hertz ... Cycles per second)
2. Loss/gain (monthly rate) .....Less than 20 seconds when the watch is worn on your wrist (5°C~35°C)
3. Operational temperature range .....-5°C ~ +50°C
4. Driving system .....Step motor, 1 piece
5. Display system .....[Time function]  
Hour and minute hands with a small second hand that moves at one-second intervals  
[Stopwatch function]  
VK63/VK73  
Stopwatch second hand turns a full circle in 60 seconds at 1/5-second intervals.  
Stopwatch minute hand turns a full circle in 60 minutes at one-minute intervals.  
VK67  
Stopwatch second hand turns a full circle in 60 seconds at 1/5-second intervals.  
Stopwatch minute hand turns a full circle in 60 minutes at one-minute intervals.  
Stopwatch hour hand turns a full circle in 12 hours at one-hour intervals.
6. Battery .....Miniature silver oxide battery SB-A4, 1 piece (SR936SW)
7. Battery life .....Approx. 3 years if the stopwatch is used for less than 60 minutes a day
8. IC (Integrated Circuit) .....Oscillator, frequency divider and driving circuit (C-MOS-IC), 1 piece

※The above specifications are subject to change without prior notice for product improvement.

### TO PRESERVE THE QUALITY OF YOUR WATCH

#### WARNING

- Immediately stop wearing the watch in the following cases :  
○ If corrosion appears on the watch body or band, etc.  
○ If the pins protrude from the band
- Immediately consult the retailer from whom the watch was purchased or a SEIKO CUSTOMER SERVICE CENTER.
- Keep the watch and accessories out of the reach of babies and children.
- Care should be taken to prevent a baby or a child accidentally swallowing any accessories.
- Do not use the watch for scuba diving or saturation diving.
- The various inspections under simulated harsh environments, which are usually required for watches designed for scuba diving or saturation diving, have not been conducted on a water-resistant watch with a BAR (barometric pressure) display. For diving, use special watches.

#### CAUTION

- Avoid wearing or storing the watch in the following places :  
○ Places where volatile agents (cosmetics such as polish remover, insect repellent, thinners etc.) are vaporizing  
○ Places where the temperature drops below 5°C or rises above 35°C for a long time  
○ Places of high humidity  
○ Places affected by strong magnetism or static electricity  
○ Dusty places  
○ Places affected by strong vibrations
- For watches with batteries, do not leave a dead battery in the compartment for a long time as it may cause battery leakage.
- If you observe any allergic symptoms or skin irritation, stop wearing the watch immediately and consult a specialist such as a dermatologist or an allergist.
- Do not let running water from a faucet hit the watch.
- The water pressure of tap water from a faucet is high enough to degrade the water resistant performance of a water resistant watch for everyday use.
- Do not turn or pull out the crown when the watch is wet; water may get inside of the watch.
- If the inner surface of the glass is clouded with condensation or water droplets appear inside of the watch for a long time, the water resistant performance of the watch is deteriorated. Immediately consult the retailer from whom the watch was purchased or a SEIKO CUSTOMER SERVICE CENTER.
- Do not leave moisture, sweat and dirt on the watch for a long time.
- Be aware of the risk that a water resistant watch may have its water resistant performance lessened because of deterioration of the adhesive on the glass or gasket or the development of rust on stainless steel.
- Do not wear the watch while taking a bath or a sauna.
- Steam, soap or some components of a hot spring may accelerate the deterioration of the water resistant performance of the watch.
- Other cautions  
○ Do not disassemble or tamper with the watch.  
○ Keep the watch out of the reach of babies and children. Extra care should be taken to avoid risk of injury or allergic rash or itching that may be caused when they touch the watch.  
○ When disposing of used batteries, follow the instructions of your local authorities.  
○ If your watch is of the fob or pendant type, the strap or chain attached to the watch may damage your clothes, or injure the hand, neck, or other parts of your body.

#### Daily care

- The watch requires good daily care.
- Wipe away moisture, sweat or dirt with a soft cloth.
- After soaking the watch in seawater, be sure to wash the watch in clean pure water and wipe it dry carefully.
- If your watch is rated as "non-water resistant" or "water resistant for daily use," do not wash the watch.

#### Water resistance

Refer to the table below for the description of each degree of water resistant performance of your watch before use.

Indication on the case back	Water resistant performance	Condition of use
No indication	Non-water resistance	Avoid drops of water or sweat
WATER RESISTANT	Water resistance for everyday use	The watch can withstand accidental contact with water in everyday life. <b>WARNING</b> Not suitable for swimming
WATER RESISTANT 5 BAR	Water resistance for everyday use at 5 barometric pressures.	The watch is suitable for sports such as swimming.
WATER RESISTANT 10 (20) BAR	Water resistance for everyday use at 10(20) barometric pressures.	The watch is suitable for diving not using an air cylinder.

#### Band

The band touches the skin directly and becomes dirty with sweat or dust. Therefore, lack of care may accelerate deterioration of the band or cause skin irritation or stain on a sleeve cuff. The watch requires a lot of attention for long usage.

#### Metallic band

- Moisture, sweat or soil will cause rust even on a stainless steel band if they are left for a long time.
- Lack of care may cause a yellowish or gold stain on a sleeve cuff of shirts.
- Wipe off moisture, sweat or soil with a soft cloth as soon as possible.
- To clean the soil around the joint gaps of the band, wipe it out and then brush it off with a soft toothbrush. (Protect the watch body from water splashes by wrapping it in plastic wrap, etc.)
- Because some titanium bracelets use pins made of stainless steel, which has outstanding strength, rust may form in the stainless steel parts.
- If rust advances, pins may poke out or drop out, and the watch case may fall off the bracelet, or the clasp may not open.
- If a pin is poking out, personal injury may result. In such a case, refrain from using the watch and request repair.

#### Leather band

- A leather band is susceptible to discoloration and deterioration from moisture, sweat and direct sunlight.
- Wipe off moisture and sweat as soon as possible by gently blotting with a dry cloth.
- Do not expose the watch to direct sunlight for a long time.
- Please take care when wearing a watch with a light-colored band, as dirt or stains are likely to show.
- Refrain from wearing a leather band watch other than Aqua Free bands while bathing, swimming, and when working with water even if the watch itself is water-resistant enforced for daily use (10-BAR water resistant).
- Polyurethane band  
A polyurethane band is susceptible to discoloration from light, and it may be deteriorated by solvent or atmospheric humidity.  
Especially a translucent, white, or pale-colored band easily adsorbs other colors, resulting in color smears or discoloration.  
Wash off dirt in water and clean the band with a dry cloth.  
(Protect the watch body from water splashes by wrapping it in plastic wrap, etc.)
- When the band becomes less flexible, have the band replaced with a new one. If you continue to use the band as it is, the band may develop cracks or become brittle over time.
- Note on skin irritation and allergy:  
Skin irritation caused by a band has various reasons such as an allergy to metals or leather, or skin reactions against friction or dust or the band itself.
- Notes on the length of the band  
Adjust the band to allow a little clearance with your wrist to ensure proper airflow. When wearing the watch, leave enough room to insert a finger between the band and your wrist.

#### CAUTION

#### Magnetic resistance

Affected by nearby magnetism, a watch may temporarily gain or lose time or stop operating.

Indication on the case back	Condition of use
No indication	Keep the watch more than 10 cm away from magnetic products.
U	Keep the watch more than 5 cm away from magnetic products. (JIS level-1 standard)
U	Keep the watch more than 1 cm away from magnetic products. (JIS level-2 standard)

If the watch becomes magnetized and its accuracy deteriorates to an extent exceeding the specified rate under normal use, the watch needs to be demagnetized. In this case, you will be charged for demagnetization and accuracy readjustment even if it happens within the guarantee period.  
The reason why watch is affected by magnetism  
The built-in motor is provided with a magnet, which may be influenced by a strong external magnetic field.

#### Examples of common magnetic products that may affect watches



### AFTER-SALES SERVICE

#### Notes on guarantee and repair

- Contact the retailer the watch was purchased from or a SEIKO CUSTOMER SERVICE CENTER for repair or overhaul.
- Within the guarantee period, present the certificate of guarantee to receive repair services.
- Guarantee coverage is provided in the certificate of guarantee. Read it carefully and retain it.
- For repair services after the guarantee period has expired, if the functions of the watch can be restored by repair work, we will undertake repair services upon request and payment.

#### Replacement parts

- SEIKO makes it a policy to typically keep a stock of replacement parts for this watch for 7 years. Replacement parts are those which are essential for maintaining the functional integrity of the watch.
- When repairing your watch, please keep in mind that if original parts are not available, parts may be replaced with substitutes whose outward appearance may differ from the originals. Also note that the complete set of parts with the case or band may be replaced, or if repair is difficult, the watch may be replaced with one of equal quality.

#### Inspection and adjustment by disassembly and cleaning (overhaul)

- Periodic inspection and adjustment by disassembly and cleaning (overhaul) is recommended approximately once every 3 to 4 years in order to maintain optimal performance of the watch for a long time. According to use conditions, the oil retaining condition of your watch mechanical parts may deteriorate, abrasion of the parts due to contamination of oil may advance or delay the time significantly, or the watch itself may stop. As parts such as a gasket may deteriorate, water-resistant performance may be impaired due to intrusion of perspiration and moisture. Please contact the retailer from whom the watch was purchased for inspection and adjustment by disassembly and cleaning (overhaul). For replacement of parts, please specify "SEIKO GENUINE PARTS." When asking for inspection and adjustment by disassembly and cleaning (overhaul), make sure that the gasket and push pin are also replaced with new ones.
- When your watch is inspected and adjusted by disassembly and cleaning (overhaul), the movement of your watch may be replaced.